



ON0050 - ON0111

**ITA** **Struttura** Multistrato 3D di faggio curvato tinto e base in acciaio verniciati nei colori riportati in "Materiali e finiture".

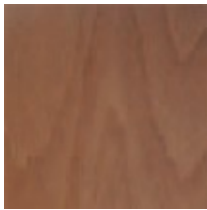
**DEU** **Struktur** Buchensperrholz, gebogen in 3D und gestell in Stahl lackiert in den Farben laut "Materialien und Ausführungen".

**ENG** **Structure** 3D bent beech plywood and base in steel varnished in the colours shown in "Materials and Finishes".

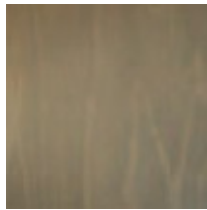
**FRA** **Structure** Multiplis 3D en hêtre courbé laqué et base in acier vernis dans les couleurs indiquées dans "Matériaux et finitions".

**MATERIALI E FINITURE****Colori scocca**

Shell colors  
Farben Sitzschale  
Couleurs coque

**MATERIALS AND FINISHES - MATERIALIEN UND AUSFÜHRUNGEN - MATERIAUX ET FINITIONS**

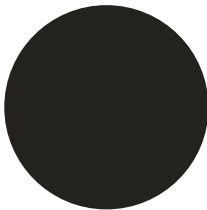
Copperwood



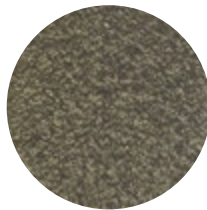
Ironwood

**Colori base**

Base colors  
Farben Gestell  
Couleurs de base





Black Ral 9005

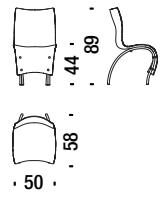


Golden bronze

**Sedia**

Chair - Stuhl - Chaise



 0,3 m³  15 Kg

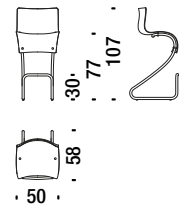


**050**

**Sgabello basso**

Stool low - Hocker tief - Tabouret bas

 0,5 m³  20 Kg



**111**