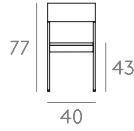


FURNITURE

NA XEMENA. RAMÓN ESTEVE

SILLA SALADA

Chair / Stuhl / Sedia / Chaise



Ref.

Size / Finish

Silla salada

40x48x77h cm
16"x19"x31"h

Weight
Volume

7,91 Kg / 15,82 lbs
0,31 m³ / 10,94 ft³

Anodized / Eloxiert / Anodizzato / Anodisé
White / Weiß / Bianco / Blanc
Sand / Sand / Sabbia / Sable
Bronze / Bronze / Bronzo / Bronze
Tobacco / Tabak / Tabacco / Tabac

Seat

43h cm
17"h

Mat

Protective cover

Made of anodized or thermo-lacquered aluminium profiles and 100% recyclable polyethylene. The sofa mats are covered with water-repellent fabric. Removable fabric cover.
NOTE: No special sizes available in this collection.

Hergestellt aus eloxierten oder thermolackierten Aluminiumprofilen und 100% recycelbarem Polyethylen. Die Sitzpolster der Sofas sind mit wasserabweisendem Stoff überzogen. Abziehbarer Bezug.
ANMERKUNG: Keine Sondermasse in dieser Kollektion möglich.

Realizzata in profilato di alluminio anodizzato o termolaccato e polietilene 100% riciclabile. I materassini dei divani sono rivestiti in tessuto idrofugo. Tappezzeria sfoderabile.
NOTA: In questa collezione non sono ammesse misure speciali.

Fabriquée avec un profilé en aluminium anodisé ou thermolaqué et en polyéthylène 100% recyclable. Les matelas des canapés sont recouverts de tissu hydrofuge. Tissu déhoussable.
REMARQUES: Mesures spéciales non admises dans cette collection.



G A N
D I A
B L A
S C O

GANDIA BLASCO S.A.

Músico Vert 4 46870 Ontinyent Valencia Spain T. +34 96 291 13 20. +34 902 530 302 F. +34 96 291 30 44. +34 902 530 304
gandiablasco@gandiablasco.com www.gandiablasco.com www.lacasagandiablasco.com

STANDARD COMBINATIONS



Structure: Anodized
 Profil: Eloxiert
 Struttura: Anodizzato
 Structure: Anodisé
 Polyethylene: White
 Polyethylen: Weiß
 Polietilene: Bianco
 Polyéthylène: Blanc



Structure: White
 Profil: Weiß
 Struttura: Bianco
 Structure: Bianco
 Polyethylene: White
 Polyethylen: Weiß
 Polietilene: Bianco
 Polyéthylène: Blanc



Structure: Sand
 Profil: Sand
 Struttura: Sabbia
 Structure: Sable
 Polyethylene: Sand
 Polyethylen: Sand
 Polietilene: Sabbia
 Polyéthylène: Sable



Structure: Bronze
 Profil: Bronze
 Struttura: Bronzo
 Structure: Bronze
 Polyethylene: Bronze
 Polyethylen: Bronze
 Polietilene: Bronzo
 Polyéthylène: Bronze

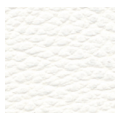


Structure: Tobacco
 Profil: Tabak
 Struttura: Tabacco
 Structure: Tabac
 Polyethylene: Tobacco
 Polyethylen: Tabak
 Polietilene: Tabacco
 Polyéthylène: Tabac

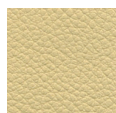
For other combinations the price of the structure is increased by 5%.
 Für andere Kombinationen wird ein Aufschlag von 5% auf den Preis des Profils berechnet.
 Per altre combinazioni il prezzo della struttura avrà un incremento del 5%.
 5% de plus sur le prix de la structure pour d'autres combinaisons.

Available colours for the upholstery. Vinyl (Naútica)

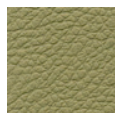
Napa



White



Cream



Sand



Bronze



Brown



Wengue



Grey



Black



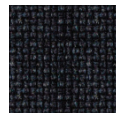
Marine

Available colours for the upholstery. Jacquard (Crevin)

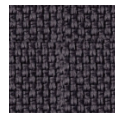
Duo



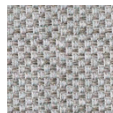
01



55



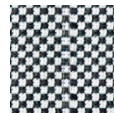
53



51



54



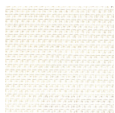
03



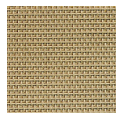
14

Available colours for the upholstery. Sunbrella

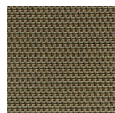
Sling



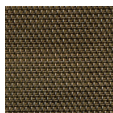
Snowy



Sand



Taupe



Cocoa



Charcoal



GANDIA
 B L A S C O

GANDIA BLASCO S.A.

Músico Vert 4 46870 Ontinyent Valencia Spain T. +34 96 291 13 20. +34 902 530 302 F. +34 96 291 30 44. +34 902 530 304
 gandiablasco@gandiablasco.com www.gandiablasco.com www.lacasagandiablasco.com