



ST1475 - ST1464

ITA Struttura

Sedia in frassino verniciato poro aperto opaco, laccato opaco o in alluminio anodizzato o satinato opaco nelle tinte riportate in "Materiali e finiture".

DEU Struktur

Stuhl in Esche gebeizt matt, lackiert offenporig matt oder in Aluminium eloxiert oder Aluminium seidenmatt Farben Sieh in "Materialien und Ausführungen".

ENG Structure

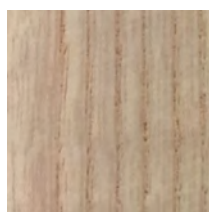
Chair in ash varnished open-pore matte, laquered matt or in anodized aluminum or aluminium satin matte in the colours shown in "Materials and Finishes".

FRA Structure

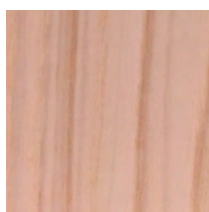
Chaise en frêne verni mat à pores ouverts, laqué mat ou en aluminium anodisé ou aluminium satiné mat dans les teintes indiquées dans "Matériaux et finitions".

MATERIALI E FINITURE**Colori sedia verniciata**

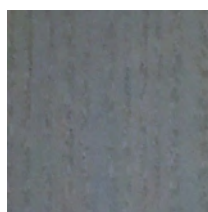
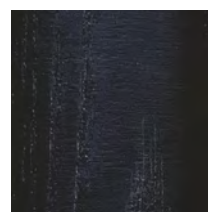
Colors varnished chair
Farben Stuhl Gebeizt
Couleurs chaise verni



Natural



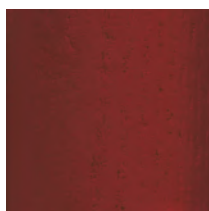
Pink

RAL 7000
Grey

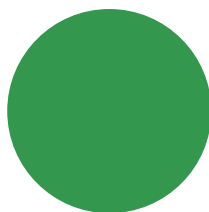
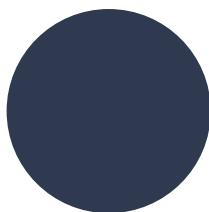
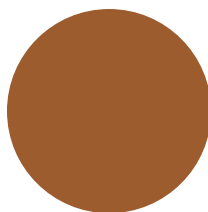
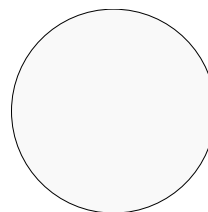
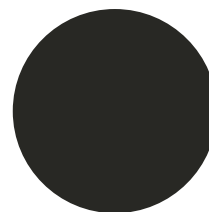
Black

Colori sedia laccata

Colors lacquered chair
Farben Stuhl lackiert
Couleurs chaise laqué

RAL 1012
YellowRAL 3013
RedRAL 5009
Blue**Colori sedia alluminio verniciato**

Colors aluminium chair varnished
Farben Aluminium Stuhl lackiert
Couleurs chaise aluminium verni

Alluminio
anodizzatoRAL 6037
GreenRAL 5020
Ocean BlueRAL 8023
OrangeRAL 9016
WhiteRAL 9011
Graphite

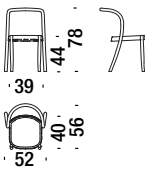
Sedia verniciata
Chair varnished - Stuhl Gebeizt - Chaise verni

464

 0,3 m³

 15 Kg

FSC® Certified



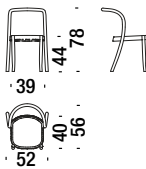
Sedia laccata
Lacquered chair - Stuhl lackiert - Chaise laqué

475

 0,3 m³


 15 Kg


FSC® Certified

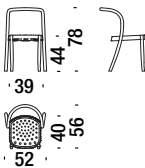


Sedia alluminio anodizzato
Aluminum chair anodized - Stuhl aus Aluminium eloxiert - Chaise en aluminium anodisé

S18


 0,3 m³


 17 Kg



Sedia alluminio verniciato
Aluminum chair varnished - Stuhl Aluminium lackiert - Chaise aluminium verni

S11

 0,3 m³

 17 Kg

